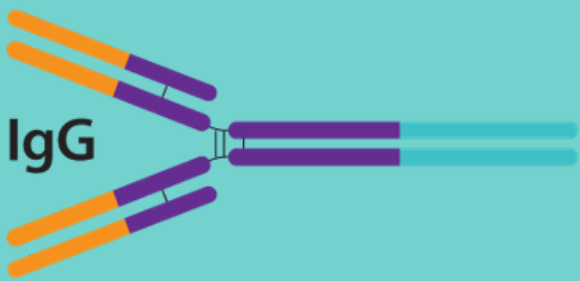
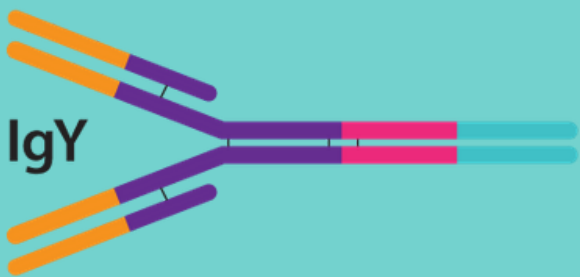


IgY vs. IgG

WHAT IS THE DIFFERENCE?



IgY are chicken antibodies, while IgG are mammalian antibodies (cows, sheep).



The main function of IgY and IgG antibodies is the defense against pathogens by binding them and thereby disabling them.

What makes IgY special?

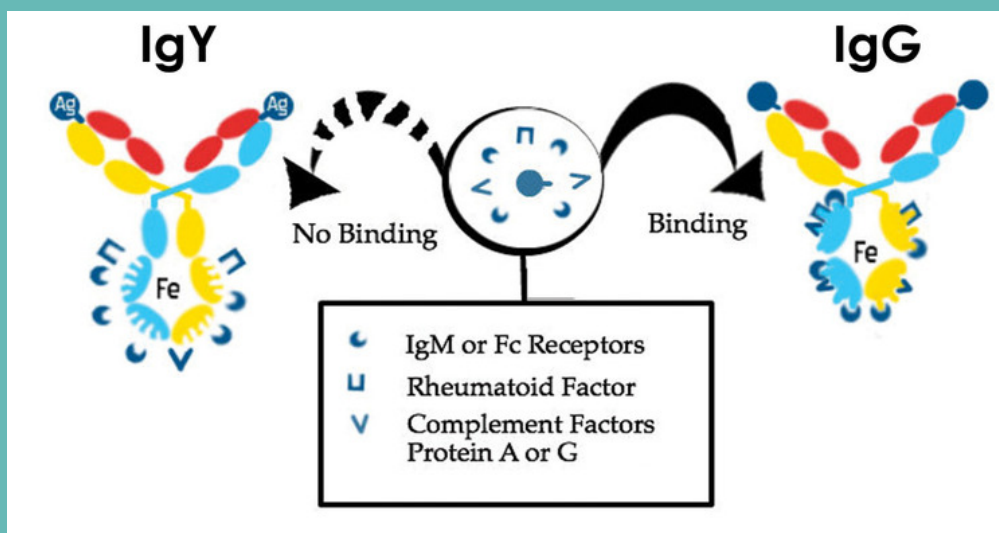
While there are similarities between IgY and IgG antibodies, here are the core benefits that make IgY different:



20 times more immunoglobulins per unit compared to IgG.



3 to 5 times higher immunogenicity than IgG, helping the immune system recognize and eliminate pathogens faster.



IgY reduces inflammatory cytokines, because unlike IgG, it is not binding to the inflammatory complement system, rheumatoid factor, Fc receptor or protein A and G.



IgY aligns with animal welfare in that it can be collected quickly and non-invasively, whereas IgG must be extracted from animal plasma through a much slower process.